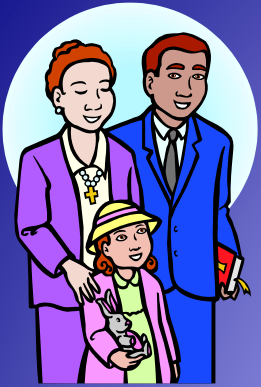


San Juan Unified School District

Every Day Counts!

Miss School. Miss Out !

PACT Presentation



Attendance Policy

Ed Code 48200, 48290

- State law requires parent/guardians of children ages 6 to 18 to send their children to school.
- Once you enroll your child you are obligated by compulsory education laws to follow the attendance policy.

District Absence Reporting Policy

- Parents receive 10 days each school year to excuse their child's absences without needing to provide medical verification.
- Absences must be cleared with the school within 5 business days or the absences will be coded unexcused.
- School must be notified the first day of absence and each day your student is absent thereafter.
- No more than three days of absence in a row is allowed for lice.
- Anytime your child has a health appointment, it is encouraged to provide documentation from a professional care provider. This verifies the absence and does not take away from 10 day parent excused limit.

Truancy

Ed Codes 48260, 48273

- The State considers a student truant after an accumulation of 3 days of unexcused absences or the student is tardy over 30 minutes or more 3 days in one school year or a combination of unexcused absences and over 30 minute tardies.
- State law requires the district to notify parents/guardians in writing when a student has reached truancy status.

Truants

- Are at a greater risk for becoming involved with gangs, drugs, alcohol, or violence.
- Truants who have a low commitment to school have increased risk factors for gang membership and future delinquent and criminal behavior.

Truancies

- **B**= late over 30 min. (truancy)
- **A** = Unverified absence. * NOT a truancy yet but will turn into one if absence is not cleared.*
- **C** = Cut
- **X**= documented unexcused/ Parent approved.
(parent called but reason given unexcused by law)
- **Y**= Rolled cut from unverified absence *after 10 school days.*

Truancy Letters

Ed Code 48260.5, 46011

- Attendance letters are computer generated
- Attendance codes B, X, C, Y will generate letters.
- Parents will receive a letter if their child has the equivalent of at least 3 days of unexcused absences or 3 over 30 minute tardies, or a combination of absences and over 30 minute tardies.
- A second letter will be sent if the child has an additional 3 days of unexcused absences.
- A third letter will be sent if the student has an additional 3 days of unexcused absence.

SARB Conference

Ed Code 48320, 48325

SARB= **S**chool **A**ttendance **R**evue **B**oard

When a student is truant, the parents and the child may be required to attend a meeting to address and correct non-attendance patterns as required by compulsory education laws.

The purpose of the conference is to discuss the child's attendance record and establish directives to remedy attendance concerns.

This meeting is a legal proceeding. The goal is to avoid referrals to legal authorities for non-compliance with attendance laws.

CWA Letters

- Ten days of illness without a doctor's note allowed. Parent may call the student in sick.
- A letter will be mailed at 10 days to let parents know that all the allowed number of days have been used. Any additional absences must have a doctor's note to be excused.



Chronic Absenteeism

Chronic absenteeism is defined as a student who misses 10% or more of school for any reason. (In 180 school days, 18 days of absence means a student is chronically absent).

Excused Absences

- **L** = Excused Tardy
- **E** = Illness parent verified- limit 10 days per year.
- **V** = Doctor/Staff verified.
- **F** = Funeral of immediate family member.
- **I/J** = short-term independent study.
- **S** = Suspension.

Student Attendance History Report

July 1, 2018 - March 14, 2019
San Juan Unified School District

Student:

Grade: 08

Gender:

Birthdate:

Track: John Barrett Middle School T 0004 18/19

Advisor: Unassigned

Counselor: Unassigned

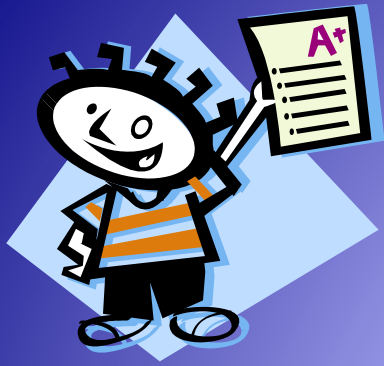
Period	December 2018	1	2	3	4	5	6	7	8	9	10	11	12	13	14	15	16	17	18	19	20	21	22	23	24	25	26	27	28	29	30	31
1				T	Y	T	T	T			S	S	T	Y	T			T	B	Y	T	Y										
2					Y	.	.	.			S	S	.	Y	.			.	.	Y	.	Y										
3					Y	.	K	.			S	S	.	Y	.			.	.	Y	.	Y										
4					Y	.	.	.			S	S	.	Y	.			T	.	Y	.	Y										
A					Y	K	.	.			S	S	.	Y	.			.	K	Y	.	Y										
5					Y	.	.	.			S	S	.	Y	.			T	.	Y	.	Y										
6					Y	.	T	.			S	S	.	Y	.			.	.	Y	.	Y										
Period	January 2019	1	2	3	4	5	6	7	8	9	10	11	12	13	14	15	16	17	18	19	20	21	22	23	24	25	26	27	28	29	30	31
1										T	V	V	V		T	V	V	V	V			.	Y	.	Y		T	.	X	T		
2										.	V	V	V		.	V	V	V	V			.	Y	.	B		.	.	X	.		
3										.	V	V	V		.	V	V	V	V			.	Y	X	.		
4										.	V	V	V		.	V	V	V	V			.	Y	.	T		.	.	X	.		
A										.	V	V	V		.	V	V	V	V			.	Y	X	.		
5										.	V	V	V		.	V	V	V	V			.	Y	.	T		.	.	X	.		
6										.	V	V	V		.	V	V	V	V			.	Y	T	.	.	.	X	.			
Period	February 2019	1	2	3	4	5	6	7	8	9	10	11	12	13	14	15	16	17	18	19	20	21	22	23	24	25	26	27	28			
1		Y			B	Y	Y	T	V		B	V	V	V	V											T	B	T	Y			
2		T			.	Y	B	.	V		.	V	V	V	V											.	.	.	T			
3		D			T	T	.	.	V		K	V	V	V	V													
4		D			V		V	V	V	V	V													
A		D			V		V	V	V	V	V													
5		V		V	V	V	V	V													
6		.			.	T	T	T	V		V	V	V	V	V										.	T	.	T				
Period	March 2019	1	2	3	4	5	6	7	8	9	10	11	12	13	14	15	16	17	18	19	20	21	22	23	24	25	26	27	28	29	30	31
1		B			T	T	X	T	X		B	A	X	A																		
2		.			.	.	X	.	X		.	T	X	A																		
3		T			.	.	X	.	X		.	.	X	A																		
4		.			.	.	X	.	X		.	T	X	A																		
A		.			.	.	X	.	X		A	.	X	A																		
5		.			T	T	X	.	X		T	.	X	.																		
6		.			T	T	X	T	X		.	.	X	.																		

Track Totals / Legend: 494 .-Present (.) 88 V-Dr/Staff Verified (V) 86 T-Tardy < or = 30 Min Unexcused (T) 86 Y-Rolled Cut from Unverified Abs (Y) 49 X- Unexcused (X) 14 S-Suspension (S) 14 K-Field Trip/Office/Sch Activiti (K) 11 B-Tardy 31+ minutes Unexcused (B) 7 A-Unverified Absent (A) 5 G-Admin App/Conf Med/Court (G) 3 D-On Site Suspension/P.A.S.S. (D) 2 L-Excused Tardy (L) 1 H-Verified Single Period Pos (H)

Did you Know?

- Students who are chronically absent are more likely than other students to drop out of school.
- Parents who are not involved with their children's school have a harder time seeing how chronic absences negatively affect their children.

If older siblings attend school regularly, their younger brothers and sisters are more likely to do the same.



Working together for all students to attend school every day!

- Consistent school attendance is one of the most reliable predictors of student success.
- Everyone has a role in improving school attendance. Student attendance and academic achievement are cooperative responsibilities between the student, family, and school.
- Student attendance for even part of the day means greater student achievement and greater resources.

MISS SCHOOL.
MISS OUT!



San Juan
Unified School District

EVERY DAY COUNTS...
AND EVERY MINUTE MATTERS

San Juan Unified School District

Attendance Improvement Team

District Office

3700 Garfield Ave.

Carmichael, CA 95608

Phone: (916) 979-8604

Fax: (916) 979-8298

Victoria Rochester, Supervisor

Lori Kehoe, SARB Secretary

Candace Yokoyama, SCW

Steffanie Kramer, SCW

Elina Gudino, SCW

Melissa Tachiera, SCIS