

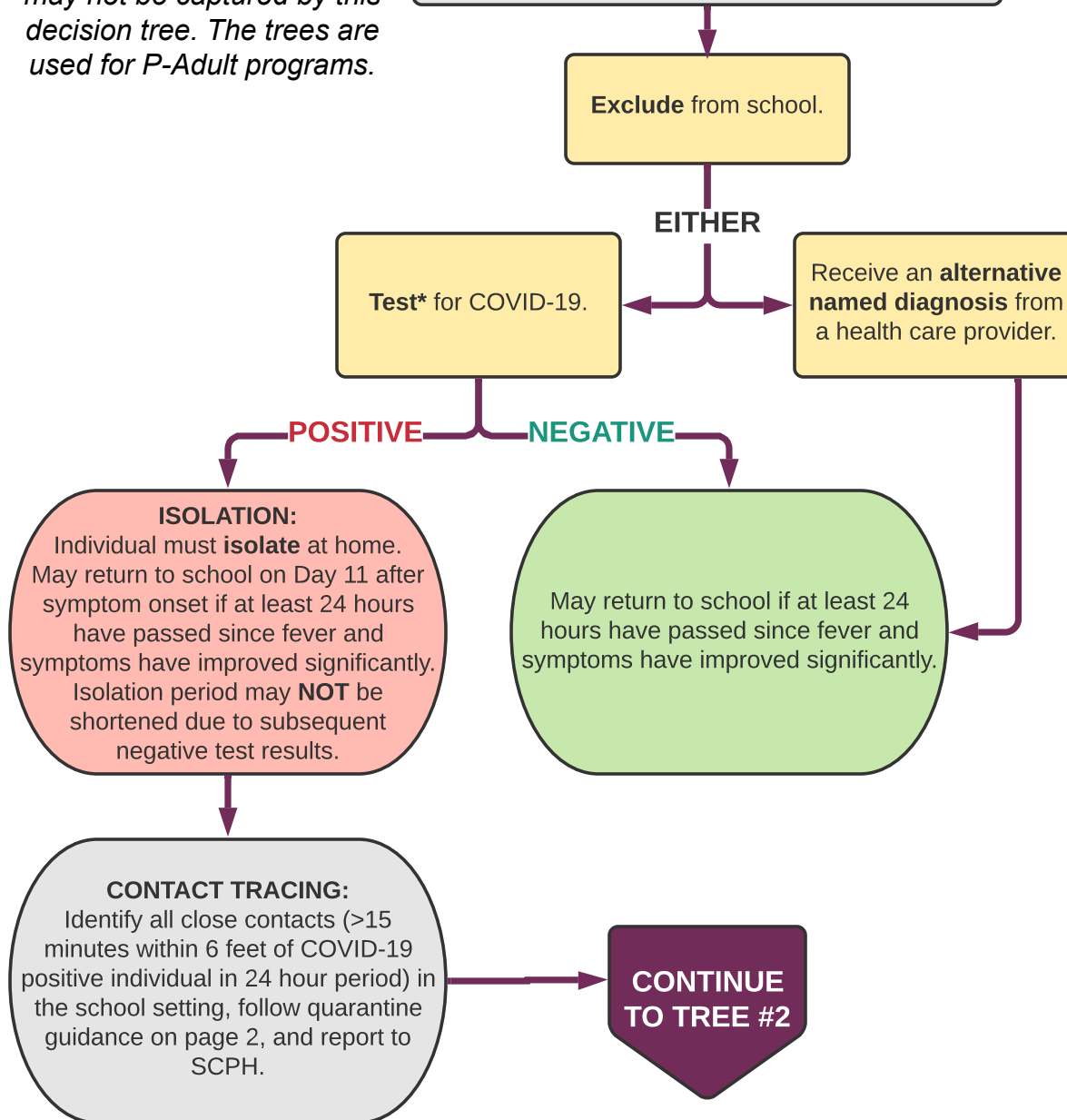
COVID-19 Symptom & Quarantine Decision Forest for K-12 Schools

TREE #1: STUDENT OR STAFF WITH SYMPTOMS

San Juan Unified note:

This decision tree is a guide and should only be used as a reference by staff in determining how to respond to COVID-19 cases. Each case must fully be evaluated based on its individual circumstances which may or may not be captured by this decision tree. The trees are used for P-Adult programs.

- Student or staff has any of the following **NEW** symptoms:
- Fever or chills
 - Cough
 - Shortness of breath or difficulty breathing
 - Fatigue
 - Muscle or body aches
 - Headache
 - New loss of taste or smell
 - Sore throat
 - Congestion or runny nose
 - Nausea or vomiting
 - Diarrhea



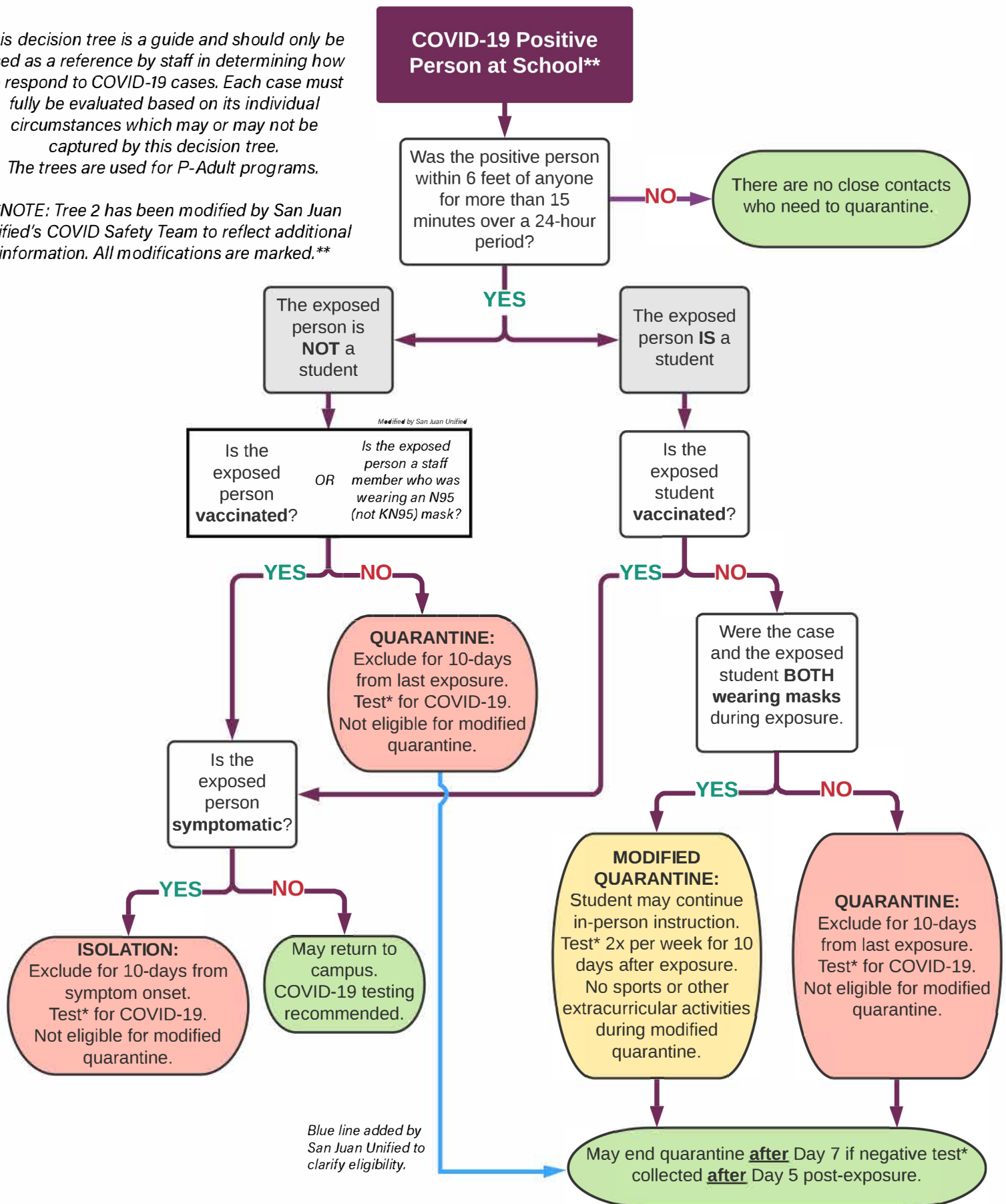
* PCR or rapid antigen testing are acceptable testing methods.

** School setting in which students are supervised by school staff, including indoor or outdoor school settings and school buses.

TREE #2: COVID-19 POSITIVE PERSON AT SCHOOL**

This decision tree is a guide and should only be used as a reference by staff in determining how to respond to COVID-19 cases. Each case must fully be evaluated based on its individual circumstances which may or may not be captured by this decision tree. The trees are used for P-Adult programs.

NOTE: Tree 2 has been modified by San Juan Unified's COVID Safety Team to reflect additional information. All modifications are marked.



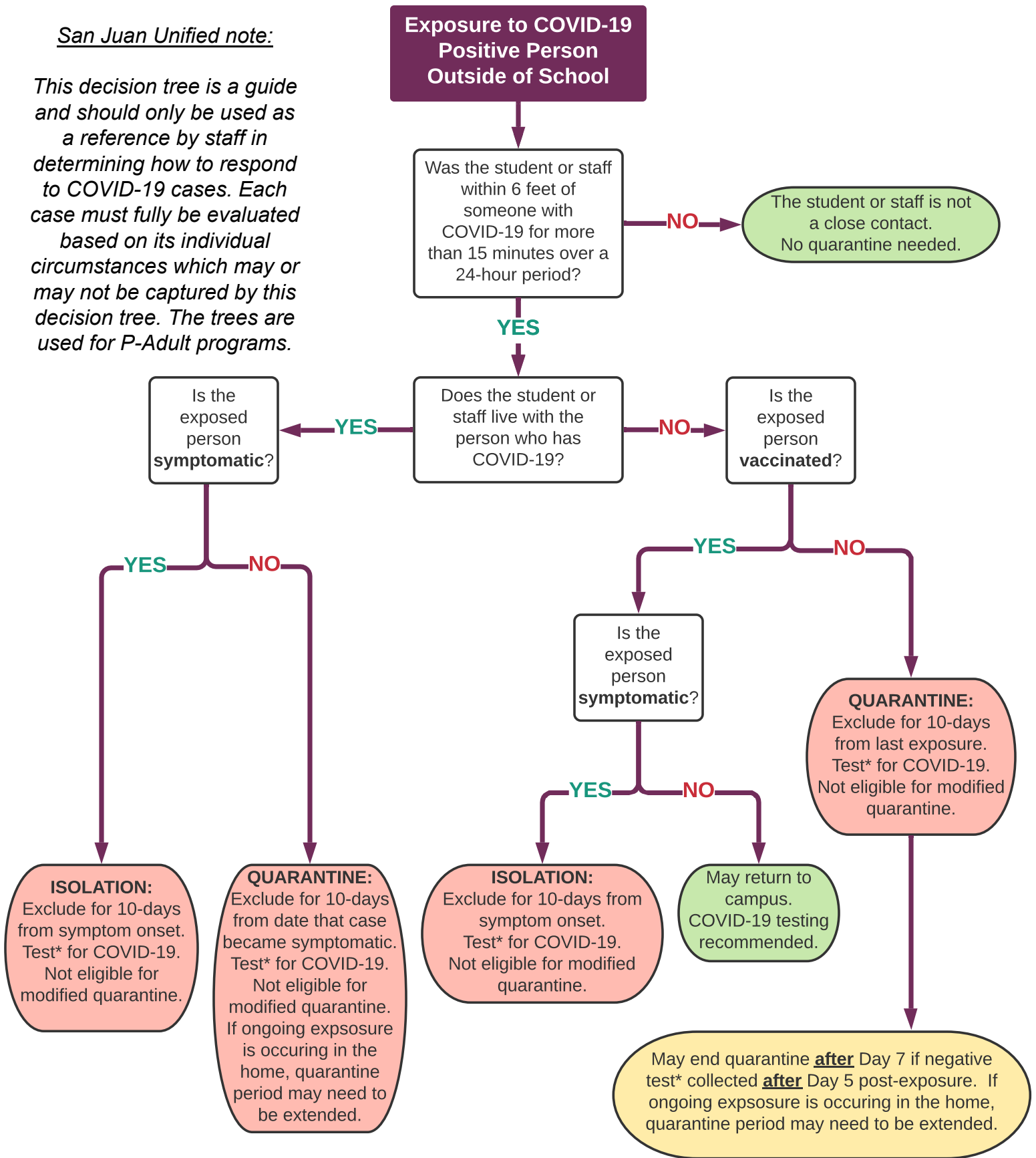
* PCR or rapid antigen testing are acceptable testing methods.

** School setting in which students are supervised by school staff, including indoor or outdoor school settings and school buses.

TREE #3: COVID-19 POSITIVE EXPOSURE OUTSIDE OF SCHOOL

San Juan Unified note:

This decision tree is a guide and should only be used as a reference by staff in determining how to respond to COVID-19 cases. Each case must fully be evaluated based on its individual circumstances which may or may not be captured by this decision tree. The trees are used for P-Adult programs.



* PCR or rapid antigen testing are acceptable testing methods.

** School setting in which students are supervised by school staff, including indoor or outdoor school settings and school buses.

August 17, 2021