

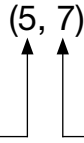
# Ordered Pairs

## Locating a point on a coordinate grid

The ordered pair  $(5, 7)$  describes the location of Point A.

The first number tells how far to move to the right along the  $x$ -axis from zero. This number is called the  $x$ -coordinate.

The second number tells how far to move up from the number on the  $x$ -axis. This number is called the  $y$ -coordinate.



## Locating a point from an ordered pair

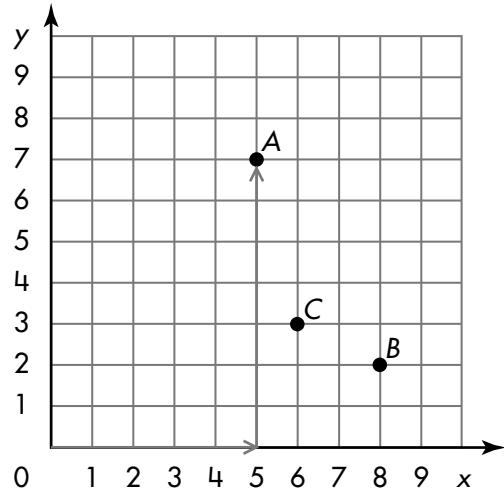
**Step 1:** Start at zero.

**Step 2:** Move 5 spaces to the right.

**Step 3:** Move 7 spaces up.

The ordered pair for  $B$  is  $(8, 2)$ .

The ordered pair for  $C$  is  $(6, 3)$ .

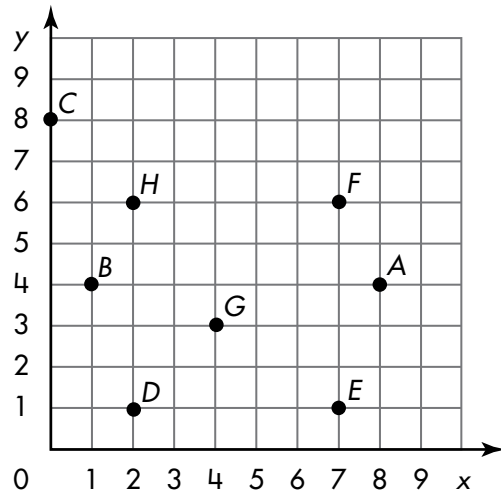


Name the point that is located by each ordered pair.

- |                   |                   |
|-------------------|-------------------|
| 1. $(7, 1)$ _____ | 2. $(2, 6)$ _____ |
| 3. $(0, 8)$ _____ | 4. $(4, 3)$ _____ |

Write the ordered pair for each point.

- |              |              |
|--------------|--------------|
| 5. $F$ _____ | 6. $B$ _____ |
| 7. $D$ _____ | 8. $A$ _____ |
9. Name two pairs of points that share the same  $x$ -coordinate.  
\_\_\_\_\_



Name \_\_\_\_\_

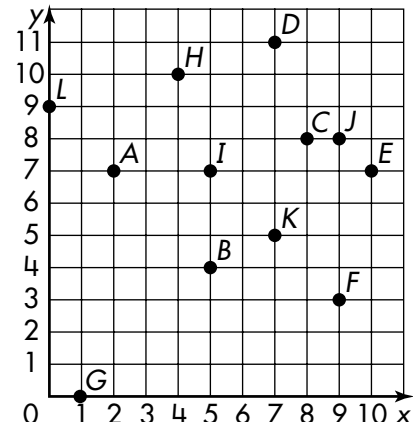
# Ordered Pairs

Name the point that is located by each ordered pair.

1.  $(9, 3)$  \_\_\_\_\_      2.  $(1, 0)$  \_\_\_\_\_  
3.  $(7, 5)$  \_\_\_\_\_      4.  $(5, 7)$  \_\_\_\_\_

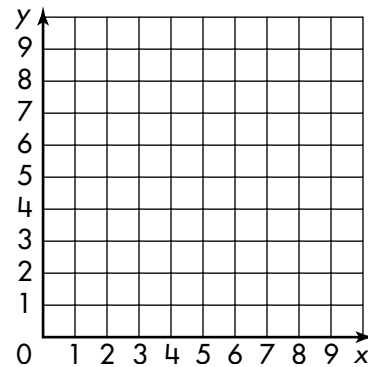
Write the ordered pair for each point.

5. *D* \_\_\_\_\_      6. *C* \_\_\_\_\_  
7. *E* \_\_\_\_\_      8. *L* \_\_\_\_\_



Plot and label each point on the grid to the right.

9.  $M(3, 4)$       10.  $Z(6, 5)$   
11.  $T(0, 9)$       12.  $X(4, 4)$   
13.  $P(3, 0)$       14.  $A(2, 8)$   
15.  $H(7, 7)$       16.  $B(2, 9)$   
17.  $J(3, 7)$       18.  $L(1, 6)$



19. Which is the ordered pair for a point that is 7 units to the right of zero along the x-axis and 8 units above it?

- A  $(8, 7)$       C  $(1, 7)$   
B  $(7, 8)$       D  $(1, 8)$

20. Why are  $(4, 6)$  and  $(6, 4)$  not at the same point on a grid?

---

---

---

---