



# New Portal

## Coming June 14

1

### Visit [portal.sanjuan.edu](https://portal.sanjuan.edu).

You will be automatically redirected to a Microsoft sign in screen.

2

### Enter your email address.

This includes your username followed by "@student.sanjuan.edu." Click Next.

Sign in

username@student.sanjuan.edu

[Can't access your account?](#)

[Sign in with Windows Hello or a security key ?](#)

Back Next

3

### Enter your network password.

This is the same password you use to log in to Q (SIS) and the old Portal. Click Sign in.

Enter password

.....|

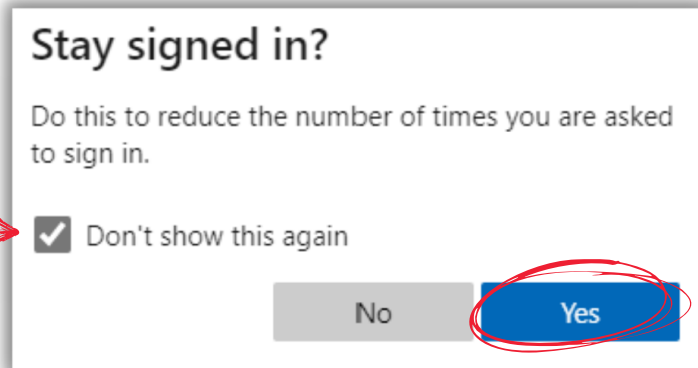
[Forgot my password](#)

Sign in

4

### Stay signed in.

Check the “Don’t show this again” checkbox and click the Yes button.



5

### Access your applications.

You will see fewer applications in the new Portal than you are used to.

Click on the Clever tile to find additional learning applications.



Click on the G Suite tile to find Google applications, such as Google Classroom, Google Drive and Gmail.



For more information on the new Portal, including instructional videos, visit:

[www.sanjuan.edu/newportal](http://www.sanjuan.edu/newportal)